

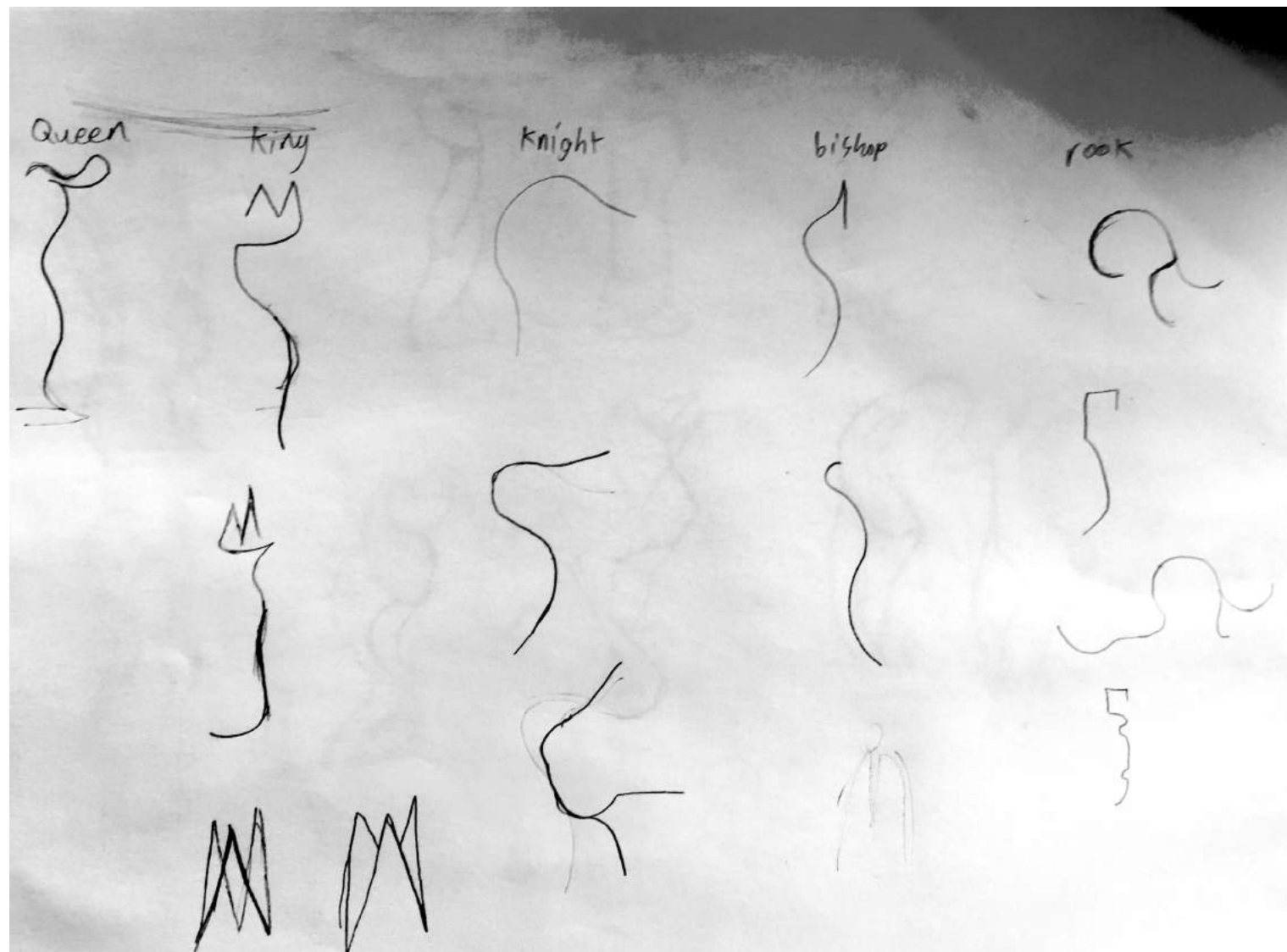
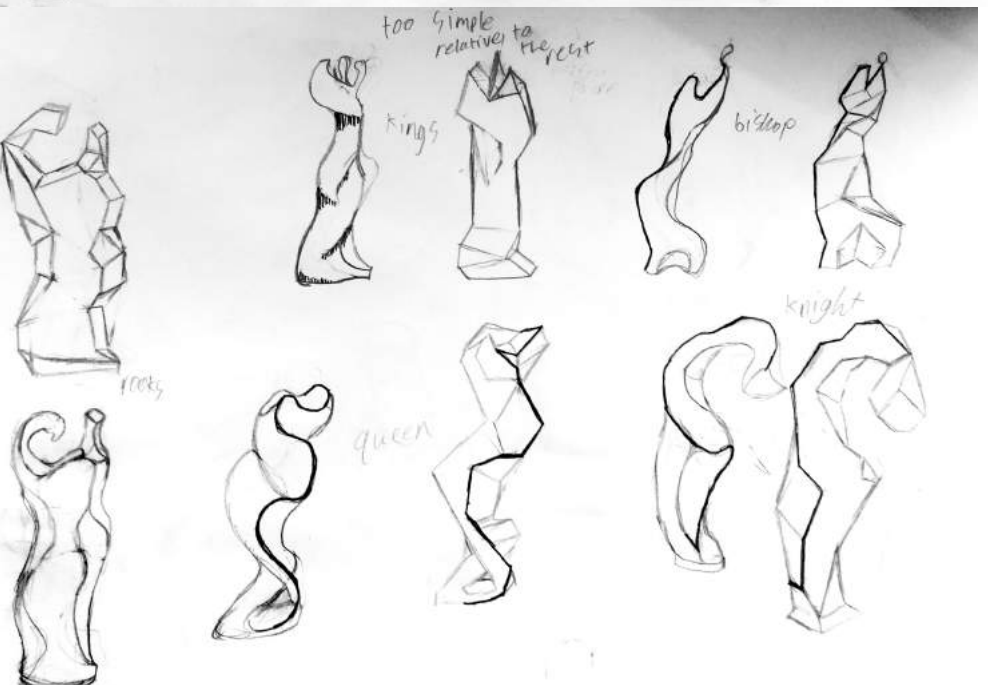
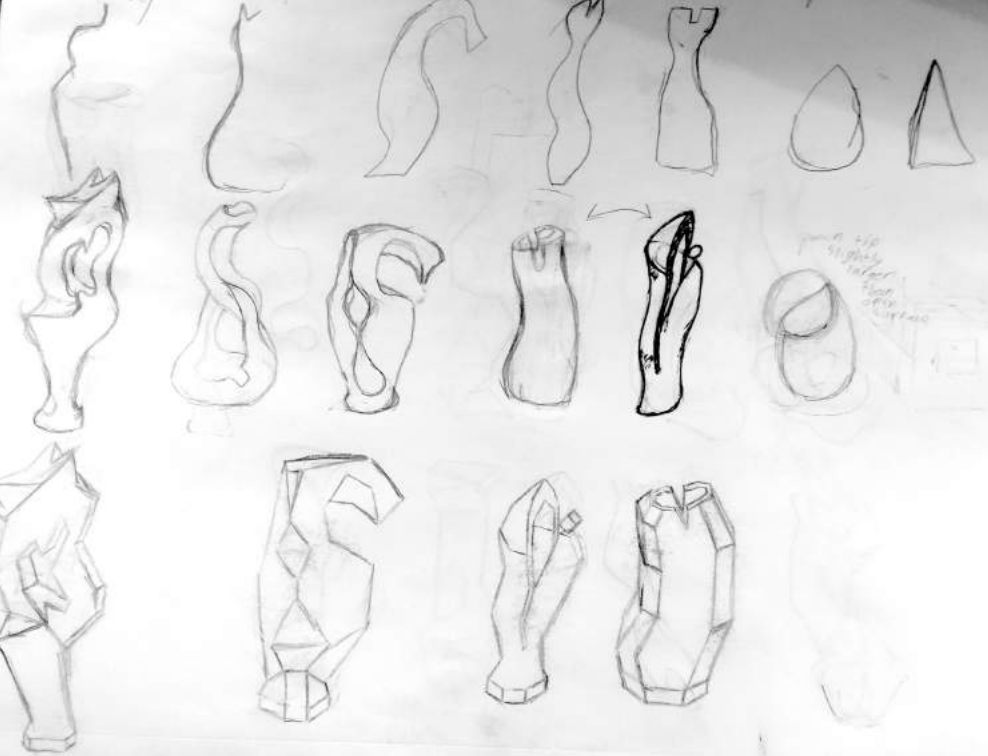
A photograph of a chess set titled 'Organic Chess'. The chessboard is made of light-colored wood with a grid of circular holes. The chess pieces are made of a dark, textured material, possibly stone or wood, and have organic, sculptural shapes. The pieces are arranged on the board, and the background is a plain, light color.

Organic Chess

A Sculptural heirloom of an age old game

Task

- Design chess pieces
 - Organic abstractions of contemporary chess pieces
 - Each piece differentiable without comparison to one another
 - Let the manufacturing and material process show
- Design a chess board
 - A design that is sculpturally pleasing
 - A design with intention
 - Chess is a fight for the center of the board



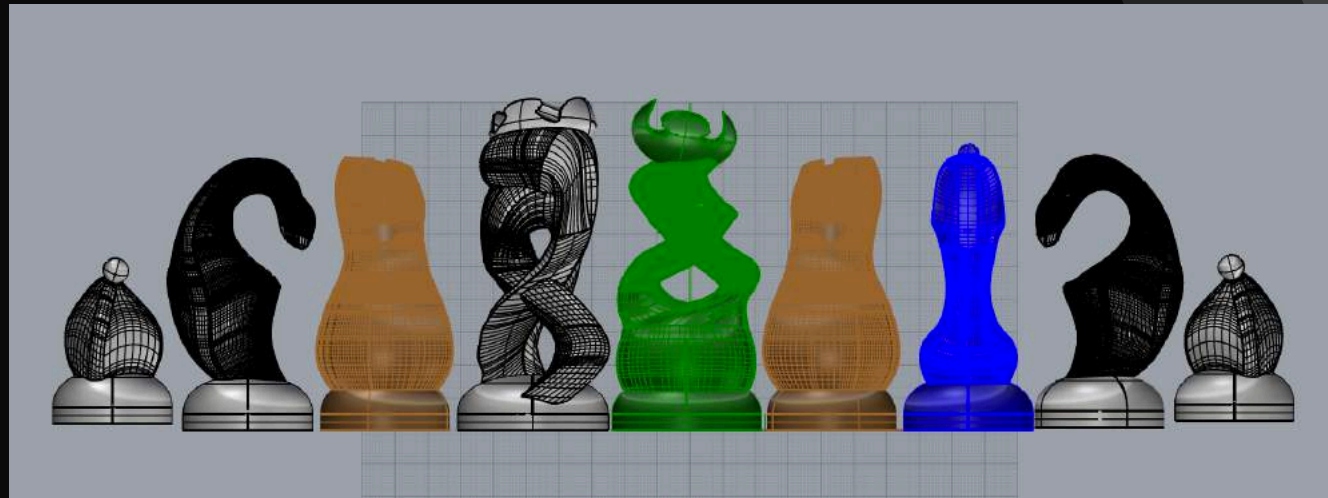
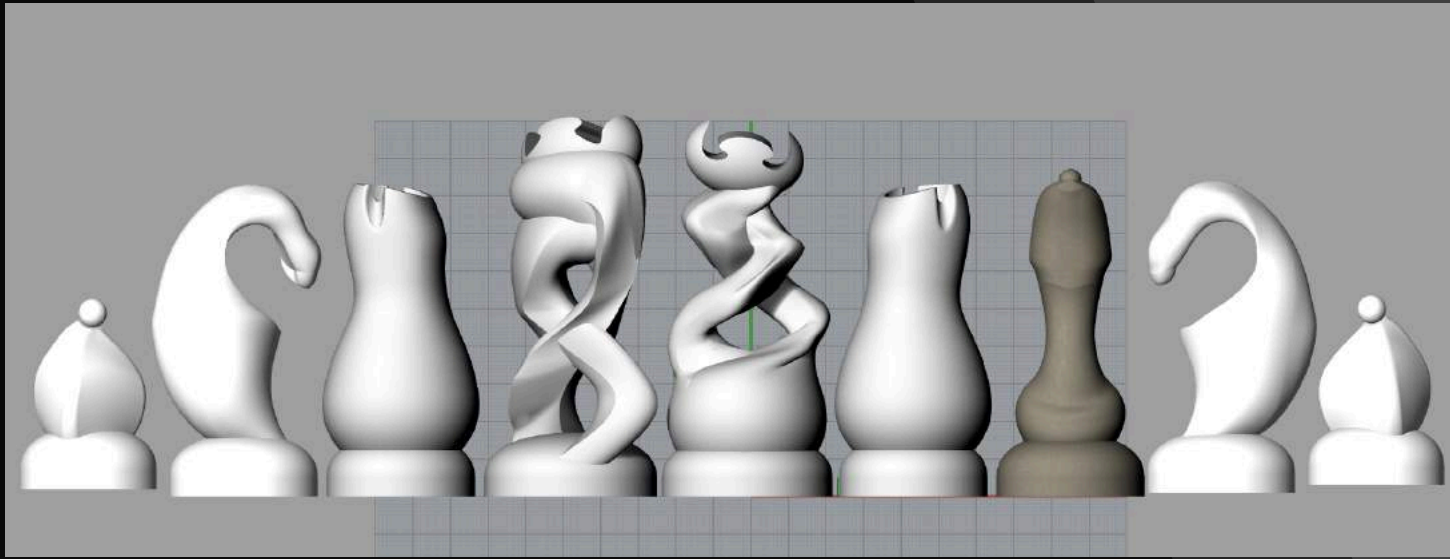
First Renders





Back to the
Drawing Board

Final Renders



Pourable Rubber Molds

- Mounted 3D prints to boards
- Cover print in plasticine
- Create two part mother molds
- Drill bold holes
- Remove plasticine
- Shellac and bolt everything
- Pour rubber
- Cast cement





Constructing the Board Top

- Plane wood
- Edge laminate
 - Wood glue
- CNC
- Sand
- Shellac
- Cast cylindrical fills
 - Sand to fit
- Calk in place
- Die woodgrain
 - Sand clean
- Shellac and wet sand
 - x4

Constructing Cement Base

- Construction foam waste mold
- CNC mill and pour
 - do not attempt to seal foam cement only adheres to itself
- Use caulk to adhere cement to wood
 - Without reinforcement warped wood will crack cement



Finishing

- Use water colors to dye cement without changing the materiality
- Cement sealant becomes more and more reflective the more coats you add
- Sealant spray strengthens cement pieces





Results
